

**TORRENS**  
LUXURY COLLECTION

**TORRENS**  
LUXURY COLLECTION

---



---

FOR SALE

# SAMIRA

BY AMELS

---

The 55m **SAMIRA** by Amels delivered in 2003, is for sale; asking €29,900,000 EU VAT Paid.

---

BUILDER:

**Amels**

---

LENGTH:

**55m (180'5")**

---

BEAM:

**9.57m (31'5")**

---

DRAFT:

**3.1m (10'2")**

---

GROSS TONNAGE:

**802 GT**

---

YEAR BUILT:

**2003 (2025)**

---

GUESTS:

**12 in 5 cabins**

---

CREW:

**13 /14**

---

CRUISING SPEED:

**11 knots**

---





SAMIRA  
MAIN SALON



SAMIRA  
MAIN SALON



SAMIRA  
MAIN SALON



SAMIRA  
MAIN SALON & DINING



SAMIRA  
MAIN SALON & DINING



---

SAMIRA  
MAIN SALON & DINING

---



SAMIRA  
SKY LOUNGE



SAMIRA  
SKY LOUNGE



SAMIRA  
SKY LOUNGE



SAMIRA  
SKY LOUNGE



SAMIRA  
MASTER STATEROOM



SAMIRA  
MASTER STATEROOM



SAMIRA  
MASTER STATEROOM



SAMIRA  
MASTER STATEROOM



SAMIRA  
MASTER STATEROOM



SAMIRA  
MASTER STATEROOM



SAMIRA  
MASTER STATEROOM BATHROOM



---

SAMIRA  
GUEST CABIN

---



SAMIRA  
GUEST CABIN



SAMIRA  
GUEST CABIN BATHROOM



---

SAMIRA  
GUEST CABIN

---



SAMIRA  
GUEST CABIN BATHROOM



---

SAMIRA  
GUEST CABIN

---



SAMIRA  
GUEST CABIN



SAMIRA  
GUEST CABIN BATHROOM



SAMIRA  
GUEST CABIN & BATHROOM





SAMIRA  
GUEST CABIN



SAMIRA  
GUEST CABIN BATHROOM



SAMIRA  
HALLWAY



SAMIRA  
EXTERIOR DECKS



SAMIRA  
EXTERIOR DECKS



SAMIRA  
EXTERIOR DECKS



---

SAMIRA  
EXTERIOR DECKS

---



SAMIRA  
EXTERIOR DECKS



---

SAMIRA  
EXTERIOR DECKS

---



SAMIRA  
EXTERIOR DECKS



SAMIRA  
EXTERIOR DECKS



---

SAMIRA  
EXTERIOR DECKS

---



SAMIRA  
EXTERIOR DECKS



SAMIRA  
EXTERIOR DECKS



SAMIRA  
EXTERIOR DECKS



---

SAMIRA  
EXTERIOR DECKS

---



SAMIRA  
EXTERIOR DECKS



---

SAMIRA  
EXTERIOR DECKS

---



SAMIRA  
EXTERIOR DECKS



SAMIRA  
EXTERIOR DECKS



SAMIRA  
EXTERIOR DECKS

SAMIRA



---

SAMIRA  
EXTERIOR PROFILE

---



SAMIRA  
EXTERIOR PROFILE



---

SAMIRA  
EXTERIOR PROFILE

---



---

SAMIRA  
EXTERIOR PROFILE

---



SAMIRA  
EXTERIOR PROFILE



---

SAMIRA  
EXTERIOR PROFILE

---



---

SAMIRA  
EXTERIOR PROFILE

---



SAMIRA  
EXTERIOR PROFILE



---

SAMIRA  
EXTERIOR PROFILE

---



---

SAMIRA  
EXTERIOR PROFILE

---



---

SAMIRA  
EXTERIOR PROFILE

---



---

SAMIRA  
EXTERIOR PROFILE

---



---

SAMIRA  
EXTERIOR PROFILE

---

# Detailed Specifications

1. Construction
2. Main Specification
3. Machinery
4. Accommodation
5. Galley & Laundry Equipment
6. Communications & Navigation Equipment
7. Entertainment & IT Equipment
8. Tenders & Watersports Equipment
9. Deck Equipment
10. Safety & Security Equipment
11. Comments
12. Exclusions
13. Refit Notes

## 1. Construction

<b>CONSTRUCTION</b>	Steel hull, Aluminium superstructure Teak laid decks
---------------------	--

## 2. Main Specification

<b>GENERAL</b>	
<b>NAME</b>	SAMIRA (hull number 439)
<b>BUILDER</b>	Amels B.V. Makkum Holland
<b>YEAR BUILT (&amp; REFIT YEARS)</b>	2003 (2025)
<b>TYPE</b>	Full Displacement, Twin Screw Diesel Motor Yacht
<b>CLASSIFICATION</b>	Lloyds *100A1 SSC Yacht Mono G6 * LMC UMS
<b>FLAG</b>	Marshall Islands
<b>DESIGNER</b>	Terence Disdale Design
<b>NAVAL ARCHITECT</b>	Amels
<b>INTERIOR DESIGNER</b>	Terence Disdale Design
<b>HULL</b>	Oyster White
<b>BOOTSTRIPE</b>	Jet Black
<b>CAPACITIES</b>	
<b>CRUISING SPEED</b>	11.0 kts
<b>MAXIMUM SPEED</b>	16.0 kts
<b>RANGE</b>	At least 4,000nm
<b>FUEL CAPACITY</b>	99.6 m3 or approx. 99,600 litres
<b>FRESH WATER CAPACITY</b>	29.1m3 or approx. 29,100 litres
<b>BLACK WATER CAPACITY</b>	18.0m3 or approx. 18,000 litres
<b>GREY WATER CAPACITY</b>	10.0m3 or approx. 10,000 litres
<b>LUBE OIL CAPACITY</b>	4.34m3 or approx. 4,340 litres
<b>DIRTY LUBE OIL</b>	3.56m3 or approx. 3,560 litres
<b>SPEED &amp; FUEL</b>	250 ltrs/hr @ cruising speed
<b>CONSUMPTIONS</b>	170 ltrs/hr @ economical speed

<b>DIMENSIONS</b>	
<b>LENGTH O. A</b>	55m / 180'5"
<b>LENGTH W. L</b>	48.50m / 159'1"
<b>BEAM</b>	9.60m / 31'6"
<b>DRAFT</b>	3.12m / 10'2"
<b>GROSS TONNAGE</b>	802gt
<b>NET TONNAGE</b>	240gt
<b>DISPLACEMENT</b>	711gt (half) and 625 (light)
<b>SLEEPING</b>	
<b>GUESTS</b>	12 in 5 cabins
<b>CREW</b>	13/14 in 8 cabins

### 3. Machinery

GENERAL	
ENGINES	Caterpillar
ENGINE MODEL	2 x 3512B DITA 1305kW each (total 2610kW) Serial numbers 2EZ00258 & 2EZ00259
ENGINE HOURS	Port: 14,532 Starboard: 14,543
FUEL	Diesel
GEARBOXES	2 x Reintjes WAV 742 Serial numbers 65,412 & 65,413
STEERING	Rolls Royce (order no. 113806)
RUDDER ANGLE INDICATORS	Rolls Royce CM30-0002-50
STABILISERS	Koop Nautic SR 4080
PROPELLERS	Lips BV 1850mm DIA, material Cunial
SHAFTS	Rubber Design RD-167-OLS.tl.C stainless steel shafts
GENERATORS	
MAIN GENERATOR	2 x Caterpillar 3406C 245kW Serial numbers 1SS00713 & 1SS00716
MAIN GENERATOR HOURS	Full overhaul in early 2024, in like new condition
EMERGENCY GENERATOR	Caterpillar 3304 50kW with 8 hours (as of 30th April 2021)
BATTERIES	
ELECTRICITY	380 V 50 Hz
SHORE POWER	Isolation transformer
BATTERIES	24V start batteries, Emergency and GMDSS

AIR CONDITIONING	
MAKE	H&H (Heinen & Hopman)
VENTILATION	2 x Carrier 30HZ/HZV 043-280 (06D/E) Compressors Nominal Cooling Capacity (134-7863kW) AC-1 - Lounge/Saloon/Dining- 3860m <sup>3</sup> /h AC-2 - Owners Area - 2035m <sup>3</sup> /h AC-3 - Guest Area - 1325m <sup>3</sup> /h AC-4 - Crew & Captain - 3980m <sup>3</sup> /h E-10 - Technical Space - 1200m <sup>3</sup> /h E-4B - Laundry - 245m <sup>3</sup> /h E-5 - Galley - 1965m <sup>3</sup> /h E-9 - Bow Thruster Compartment - 1000m <sup>3</sup> /h
OTHER MACHINERY	
WATER MAKERS	2 x Idromar IDM7 with combined capacity of 24,000 litres/day
BOW THRUSTER	Holland Roer Propeller HRP 200-60
FUEL FILTERS	Separ 2000/130/MK
FUEL OIL SEPARATOR	Alfa Laval MMPX403 SPG-11
OIL/WATER SEPARATOR	Facet CPS – BV, MOD.1 OMD-11
BILGE PUMP	Johnson FRES 50-205 27m <sup>3</sup> /hr
BOILERS	ACVETS 15
SEWAGE TREATMENT	Hamman Type: HL-CONT (serial number 6153)
WC'S	Evac 900 – all wall mounted

### 4. Accommodation

CONFIGURATION	
OWNER	1 x Owner's suite with private study, lounge, full beam double stateroom with his & hers dressing rooms, ensuite bathroom
GUEST	1 x VIP cabin with double bed and sofa area, walk-through dressing and ensuite  1 x Double guest cabins with ensuite shower/bath room  2 x Double/Triple guest cabins with ensuite shower room. Both these cabins have 1 x double bed (queen sized) and 1 x single bed
CREW	1 x Double Captain's cabin with ensuite shower room  2 x Single crew cabins with ensuite shower room  5 x Twin crew upper and lower berth cabins with ensuite shower room

## 5. Galley & Laundry Equipment

MAIN GALLEY	2 x Rational icombi pro oven 1/3gm Berner induction stove (6 hobs) 1 x Berner flat grill fitted 1 x Miele microwave 1 x Winterhalter dishwasher 1 x Liebherr fridge 1 x Eberhardt fridge 1 x Moduline hot cabinet (3 drawers)
LAUNDRY	2 x Miele PW 5065 washing machines 1 x Roller iron 2 x Miele PT5136 tumble dryers
MAIN DECK PANTRY (INTERIOR)	1 x Hoshizaki ice maker 1 x Intec undercounter wine fridge 1 x Nespresso coffee machine
BRIDGE DECK PANTRY (INTERIOR)	1 x Miele G694SCI PLUS HG01 dishwasher 1 x Miele refrigerator
LOWER DECK (BEACH CLUB)	1 X Forster Full sized wine fridge (Long Fresh)
LOWER DECK STORAGE	Walk in refrigerator and freezer (approx. 10m3)
CREW MESS	1 x Miele GG06 PG8056 U AE dishwasher 1 x GE microwave 1 x Liebherr Profi line UKS 3650 refrigerator
GARBAGE LOCKER	1 x refrigerated garbage store 7m3

## 6. Communications & Navigation Equipment

COMMUNICATIONS EQUIPMENT	
SATCOM	ORSAT AL-7103 - KU Mk 2
VSAT	SeaTel
IRIDIUM	Sailor Thrane & Thrane XA
4G RECEIVER	Pepwave
CELLULAR PABX SYSTEM	Panasonic
TELEPHONE EXCHANGE	Panasonic KX DT 434
SSB RADIO	Sailor HC 4500
INTERCOM SYSTEM	Phontec CIS 3101
VHF	1 x Sailor DSC RT 4822 1 x Sailor C4901 1 x Sailor C4900
VHF HANDHELD	2 x Icom GMDSS IC0GM1600E
UHF HANDHELD	10 x Icom handhelds
MF/HF	Sailor MF/HF HC 4500
NAVIGATION EQUIPMENT	
GYRO COMPASS	1 x C. Plath
MAGNETIC COMPASS	1 x C. Plath
AUTOMATIC PILOT	C. Plath Navipilot V HSC
BNWAS	n/a
LOG	C. Plath Naviknot III Speed log
ECHO SOUNDER	Furuno FCV 582L
CHART PLOTTER	Transas 3000
GPS	2 x Simrad MX 512
AIS	Furuno FA 100
WIND	Obsermet OMC 139

SONAR	Ecopilot FLS Platinum
NAVTEX	1 x Furuno NX 700 1 x ICS Nav %
RADAR	2 x Furuno FR 2105 X-band

## 7. Entertainment & IT Equipment

GENERAL	
WI-FI	UniFi – Ubiquity Wifi
IT SERVER	Kerio Switch
SAT TV	SeaTel 4894 TVRO Sat TV
APPLE TV	3 x Apple TV (Owner's suite, Main Salon & Sundeck)
SOUND SYSTEM	6 x Technics Amplifier SU-A899
INTERIOR GUEST AREAS	
GUEST CABIN 1	Samsung Smart TV (50-inch) Apple TV (latest generation) Sonos audio system Controlled via Crestron on a Mini iPad
GUEST CABIN 2	Samsung Smart TV (50-inch) Apple TV (latest generation) Sonos audio system Controlled via Crestron on a Mini iPad
GUEST CABIN 3	Samsung Smart TV (50-inch) Apple TV (latest generation) Sonos audio system Controlled via Crestron on a Mini iPad
GUEST CABIN 4	Samsung Smart TV (50-inch) Apple TV (latest generation) Sonos audio system Controlled via Crestron on a Mini iPad
MASTER CABIN	Samsung Smart TV (55-inch) Apple TV (latest generation) Sonos audio system Controlled via Crestron on a Mini iPad
MAIN DECK SALON	Samsung Smart TV (65-inch) Apple TV (latest generation) Sonos audio system Controlled via Crestron on a Mini iPad

MAIN DECK DINING AREA	Sonos audio system Controlled via Crestron on a Mini iPad
UPPER DECK SALON	Samsung Smart TV (75-inch) Apple TV (latest generation) Sonos audio system Controlled via Crestron on a Mini iPad
BRIDGE DECK LOUNGE	1 x Sat TV 1 x Apple Airplay 1 x DVD player
EXTERIOR GUEST AREAS	
SUN DECK	1 x Apple Airplay
BRIDGE DECK AFT	1 x Apple Airplay
MAIN DECK AFT	Sonos audio system Controlled via Crestron on a Mini iPad
FLYBRIDGE	Sonos audio system Controlled via Crestron on a Mini iPad
UPPER DECK AFT	Sonos audio system Controlled via Crestron on a Mini iPad
INTERIOR CREW AREAS	
CAPTAIN'S CABIN	1 x TV
BRIDGE DECK AFT	1 x TV 1 X DVD Player
OFFICE EQUIPMENT	3 x HP i5 PCs 2 x HP OfficeJet Printer

## 8. Tenders & Watersports Equipment

TENDER	Model: Castoldi Jet Tender 7m (J23) Serial Number: IT-CAS23B17B525 Engine Power: 184 kW @ 3800 rpm
RESCUE BOAT	Model: Castoldi Jet Tender 4.28m RB 14 Serial Number: IT-CAS14R06F222 Engine Power 132 @ 4000 rpm
WATER TOYS	2 x Kayaks 3 x SEABOBs Serial number S52 Model F5S Red Serial Number S 50 Model F5 Red Serial Number S 50 Model F5 Yellow Jet Ski Model Spark T Serial Number CA-YDV29434K122 Jet Ski Model Spark T Serial Number CA-YDV094671122
DIVING EQUIPMENT	1 x Bauer C11-E (2002) 6 x diving sets 8 x bottles on board – 4 x 15 liters and 4 x 12 liters 6 x wetsuits Note that current equipment onboard is generally used by the crew for maintenance
GYM EQUIPMENT	1 x York Fitness x202 elliptical

## 9. Deck Equipment

ANCHOR WINDLASS	Steen
AFT WARPING CAPSTANS	Steen
GROUND TACKLE	Anchors: HHP Pool N balanced 385kg Chains: 2 x 6 shackles (27.5m) galvanised 22mm stud link
AWNING	Sun Deck: 2 awnings, one forward, one aft Bridge Deck: 1 aft Main Deck: 1 aft
BOAT CRANE & DAVITS	Port, Rescue Tender: Van Driel, one beam and one lifting point Starboard, Guest Tender: Van Driel two beams and 3 lifting points 1 x Rotary crane on aft bridge deck 1 x Scissor lift in lazarette
PASSERELLE	Cramm, length 6m, Swivels 45o either side of centre line and moves +/- 20o vertically
SIDE BOARDING LADDERS	Starboard side boarding ladder, port side opening bulwark
SWIMMING PLATFORM	Cramm 2.3m x 5m
SEARCHLIGHT	2 x Aqua Signal handheld 54v 50w port and starboard bridge wing controls

## 10. Safety & Security Equipment

SAFETY	
IMMERSION SUITS	10 x Eurasieuro size 185cm (Universal size) 3 x Eurasieuro size 165c, (Medium)
LIFE JACKETS	24 x Adult Creda Mk2 - Med approved 2 x Child Creda Mk2 - Med approved
SART	2 x Safe Seas Ocean Signal
EPIRB	1 x McMurdo E5
LIFE RINGS	8 x Med approved
GRAB BAG	Wheelhouse
LINE THROWER	4 x Pains Wessex linethrower 250
EEBD	5 x Drager
LIFE RAFTS	4 x RFD Surviva 20 person
FIRE FIGHTING	
INTERIOR	
FIXED FIRE PUMP	Johnson FRE 50-205-27m3/hr
EXTINGUISHERS	28 x Ningbo Powder 2 x Ningbo Foam 8 x Ningbo CO2 1 x Ningbo Wet/chem
FIRE BLANKETS	1
BA	4 x Lalizas
FIRE FIGHTING SUITS	2 x Jackets & 2 x pants - Fire Buddy Plus
FIRE HOSES & ATTACHMENTS	14 x 20m length Van Rullen PVR 2/00 dia. 2"
MEDICAL	
EYEWASH STATION	1 in engine room
DEFIBRILLATOR	1 in bridge
MEDICAL KITS	1 pharmacy, 2 First Aid, Trauma bag and splints, on bridge

ALARMS	
UMS	Praxis
SECURITY	
CCTV DETAILS	1 x Engine room 2 x Main Deck (Port & Starboard) 1 x Main Deck aft
SSAS	Yes

## 11. Comments

---

When launched, she was built to MCA LY1 regulations, which were the rules in force at the time of build. She operated under a commercial registry for a short time and then switched to private.

Maintenance system onboard: An ISM-based card system planned maintenance approved by Class was in effect when the yacht was commercially operated which has now been integrated into an Excel system. Planned maintenance up to date and maintenance records kept onboard.

Below is a summary of works carried out.

- Last major “refit” carried out at Monaco Marine, La Ciotat in 2022/23
  - Main engines and gearboxes overhauled in 2021/22
  - Both main generators fully overhauled in 2024
  - Lloyd’s certification in 2023/24
  - Last repaint 2022/23 at Monaco Marine, La Ciotat
  - IT – PepWave BR1 Router updated 2021
- 

## 12. Exclusions

---

A complete list of exclusions is available upon request

---

## 13. Refit Notes

LOCATION: CAPAX SHIPYARD

GRAND TOTAL (EX VAT): = €1.41 MILLION

### 1. GENERAL SERVICES - ~€255K

- Docking, protections, scaffolding, containers.
- Yard services (utilities, waste, heating, access).
- Fire & security planning, logistics, crew assistance.

### 2. HULL UNDERWATER - ~€57K

- Surface preparation & primer application.
- Antifouling paint system (supply & application).
- Zinc anodes renewal.
- Propellers/shafts polishing & PropSpeed application.
- Sea chest cleaning & inspection.

### 3. PIPE WORKS - ~€77K

- Grey/black water system cleaning.
- Investigation of sewage smell.
- Replacement of thrust bearing piping.
- Minor modifications to existing pipe systems.

### 4. AC, HVAC & REFRIGERATION - ~€66K

- Cleaning of AHUs & ducting.
- Fan coil units service & filters replacement.
- Refrigeration system overhaul (cold rooms, technical spaces).
- Minor steel pipe replacements in HVAC loop.

### 5. INTERIOR - ~€17K

- Interior dismantling & reinstatement for access.
- Shower marble polishing/repairs (guest areas).
- Limited cosmetic carpentry and touch-ups.

### 6. DECK - ~€190K

- Boarding ladders inspection, modifications & repaint.
- Balcony doors servicing & sealing works.
- Gantry crane remote-control system installation.
- Lazarette door inspection & sealing.
- Swim platform filler repairs & paint touch-ups.
- Passerelle painting and sealing.

### 7. ENGINEERING - ~€290K

- Main engine exhaust spray ring cleaning.
- Renewal of insulation (engine room).
- Shaft alignment checks and measurements.
- Stabilizer system servicing.
- Hydraulic pumps and valves overhaul.
- Silencer welding and minor engine room steel works.
- MC3 conversion & watermaker upgrade.

### 8. ELECTRICAL - ~€8K

- Power balance calculations.
- Generator load bank testing.
- Minor troubleshooting of circuits.

WINTER 2022/2023

LOCATION: MONACO MARINE, LA CIOTAT

GRAND TOTAL (EX VAT): = €7.76 MILLION

### 1. SHIPYARD STAY & SERVICES - ~€350K

- Quay stay, docking/hauling, hardstanding, utilities, heating, waste treatment, containers, customs formalities, shipyard access, cranes/logistics.

### 2. PAINT & SURFACE WORKS - ~€2.1M

- Paint shed rental & logistics, scaffolding & tenting, Zytexx removal, caulking & hardware, full paintwork incl. hull & ceilings, corrosion treatment.

### 3. STRUCTURAL & STEEL WORKS - ~€1.2M

- Shell doors, passerelles & gangways dismantling/service, margin boards corrosion & teak works, deck & superstructure repairs (benches, gangways, stairways, tender garage), main deck starboard repairs, lazarette corrosion, deckplate & pillar repairs.

### 4. CARPENTRY & INTERIORS - ~€230K

- Interior dismantling & reinstatement, marble repairs in guest/master showers, deckhead repairs before wrapping.

### 5. TEAK & EXTERIOR DECK - ~€260K

- Teak margin boards & steps removal, caulking & sanding, swim platform teak removal & refit.

### 6. MECHANICAL & PIPING - ~€450K

- Grey water & cold room piping, ER pipes, pumps & valves servicing, HVAC pumps/valves, steering gear servicing & oil treatment.

### 7. HVAC & SYSTEMS - ~€410K

- Heinen & Hopman HVAC upgrades, AC unit works, AC steel pipe replacement.

### 8. SAFETY & FIRE SYSTEMS - ~€320K

- HiFog upgrade, smoke/heat detectors supply & troubleshooting, sprinkler cabinet & watertightness works.

### 9. STABILIZERS & THRUSTERS - ~€225K

- Stabilizer servicing, bow thruster room repairs & valves, shaft & rudder clearance measurements.

### 10. HATCHES, DOORS & OUTFITTING - ~€750K

- Refurbishment of hatches & doors, pantograph & balcony doors, tender garage/transom doors, side boarding ladders repairs.

### 11. ELECTRICAL & LIGHTING - ~€200K

- New sockets, deckhead LED upgrades, nav lights replacement, guest area troubleshooting, courtesy/canopy lights, speakers.

## 13. Refit Notes (continued)

### 12. MISCELLANEOUS & PROJECT COSTS - ~€1.3M

- Naval Architecture – €14k
- MC3 conversion & repair – €258k
- Dive compressor replacement – €12k
- Watermaker replacement – €58k
- Belzona & GRP repairs – €5k
- Metal & hardware works – ~€150k
- Corrosion treatments – ~€90k
- Logistics & minor T&M – ~€120k
- Project management fee (2.5%) – €187k
- Insurance (1.9%) – €142k
- Other small works & consumables – ~€250k

### WINTER 2021/2022

LOCATION: LUSBEN, LIVORNO

GRAND TOTAL APPROVED / SPENT (EX VAT): = €5,0 MILLION

### 1. GENERAL & YARD SERVICES - ~€500K

- Dockage, electricity, and fresh water supply.
- Fire/security planning and ship sanitation.
- Interior & exterior protections, containers/offices, internet.
- Crew accommodation during extended tank cleaning.

### 2. DRYDOCKING & PROTECTION - ~€600K

- Shiplift hauling/launching and divers' assistance.
- Scaffolding, towers, and full vessel protection.
- Sandblasting, antifouling, paint supply, and anodes.
- Hull thickness measurements and ground rental.

### 3. ENGINEERING / MACHINERY - ~€1.6M

- Overhaul of CAT 3512 main engines (Simar) and Reintjes gearboxes.
- Shafts & propellers alignment (Exakt Alignment) and rudder repairs.
- Generator servicing, alternators, and fuel/grey/black/fresh water pumps.
- Valve overhauls, sewage treatment plant, OWS certification.
- Stabiliser brain system upgrade (Samos) and HVAC compressor/duct works.

### 4. TECHNICAL SYSTEMS (ELECTRICAL, AV/IT, HVAC, FIRE) - ~€1.0M

- Navigation instruments upgrade (bridge systems).
- AV/IT, PMS, CCTV and VSAT/TVsat upgrades (De Keizer, IdeaWorks).
- Interior lighting and sockets renewal (Armonica).
- Octo Marine sterilisation, softener, and undersink water units.
- Fire detection and sprinkler repairs.

### 5. NAVAL ARCHITECTURE & STABILITY - ~€300K

- Naval architect services (Longobardi) and class meetings.
- Inclining test and stability booklet amendment.
- Supply and installation of ~26 tons of lead ballast.

### 6. DECK EQUIPMENT - ~€400K

- Windlass and capstan overhauls.
- Anchor chains cleaning, inspection, and measurements.
- Overhaul of aft & port cranes, plus Atlas carbon davit installation.
- Boarding ladders, rescue tender equipment, and associated works.

### 7. INTERIORS & FURNISHINGS - ~€800K

- Interior redesign (Alessandro Massari).
- Loose furniture and fittings (Flexiform, Meridiani, Poliform, Simonetto).
- Carpets & fabrics (Loloey, Luxury Carpet Studio) and decorative lighting.
- Galley refit (Abimis) and laundry upgrades (Miele).
- Artwork and finishing elements.

### 8. TEAK & DECK SURFACES - ~€250K

- Recaulking of sundeck and foredeck.
- Replacement of damaged teak planks.
- General caulking and touch-ups across exterior decks.

### 9. TENDERS & TOYS - ~€200K

- Refit of Petticrow sailing tender and Castoldi service.
- Purchase of new Seadoo jet skis and associated chocks.
- Tender cradles, covers, and rescue tender certification.

### SIMAR GROUP (2022-2025)

TOTAL (EX VAT): = €273,000

- CAT 3406 generators: Full overhauls (mechanical, alternators, spares & labour).
- CAT 3512 main engines: Rewiring, new sensors/PLC, injector harnesses, turbo & pump servicing.
- PMS & parallel system: New controllers, motorised switches, touchscreen integration with protections.
- Extras (2023): Minor wiring, spares, carpentry/electrical add-ons.

### MARINE & CO. (2024-2025)

TOTAL (EX VAT): = €177,000

- Shore power restoration & upgrade.
- Main switchboards & breakers: Hamann, laundry, chillers, compressors.
- Load bank system: Restored & reconnected.
- Auxiliary systems: Wipers, tender charging sockets, GMDSS voltmeters.
- Miscellaneous: Insulation checks, indicator lamps, cabling.
- Logistics: Teams dispatched to France & Croatia (Trogir), truck shipment of materials.

### MOTORTEC (2023-2024)

TOTAL (EX VAT): = €310,000

- CAT 3406 generators: Complete overhauls (cooling, fuel, lubrication, crankshaft/camshaft, turbo, intercooler).
- Parts & labour: Cylinder packs, bearings, seals, pumps, gaskets, filters, testing & commissioning.
- Extras: Lloyd's certification, EIAPP documentation, waste/coolant disposal, painting.
- Spare parts & estimates: Turbo cartridges, oil/fuel pumps, freight, travel, accommodation.
- Miscellaneous: Survey support, recycling, technician standby.

## 13. Refit Notes (continued)

---

EXECUTIVE REFIT & SPECIALIST WORKS OVERVIEW (2021-2025)  
CONSOLIDATED RECAP (2021-2025)

---

WINTER 2021/2022 REFIT - LUSBEN, LIVORNO

€ 5,000,000 (ex VAT)

2022/2023 MAJOR REFIT - MONACO MARINE, LA CIOTAT

€7,760,000 (ex VAT)

2024/2025 REFIT - CAPAX SHIPYARD

€1,410,000 (ex VAT)

SIMAR GROUP (2022-2025)

€270,000 (ex VAT)

MARINE & CO. (2024-2025)

€180,000 (ex VAT)

MOTORTEC (2023-2024)

€310,000 (ex VAT)

CONTENTS - EQUIPMENT / AV (2021-NOW)

€95,000 (ex VAT)

GRAND TOTAL (2021-2025)

≈ €15,880,000 (ex VAT)

**Overall Investment:** ≈ €15.9 million (ex VAT)

**Refit Cycle Covered:** Winter 2021/2022 > May 2025

**Shipyards & Partners:** Lusben (Livorno), Monaco Marine (La Ciotat), Capax Shipyard, Simar Group, Marine & Co., Motortec

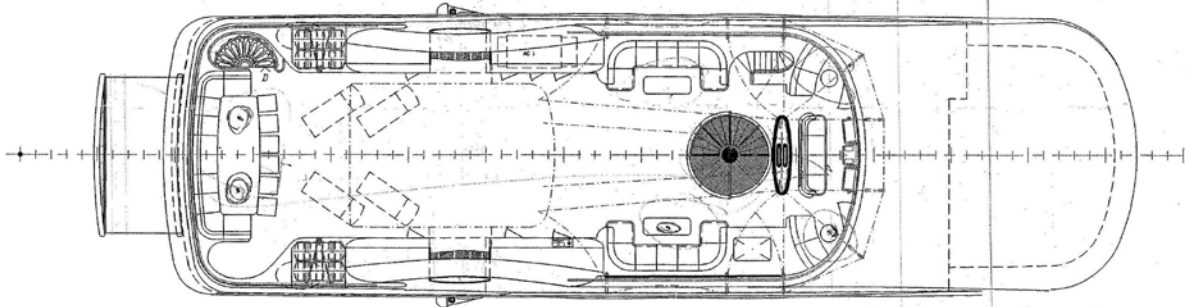
---

---

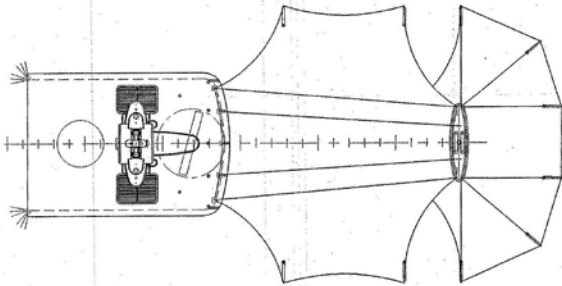
SAMIRA  
DETAILED SPECIFICATIONS

---

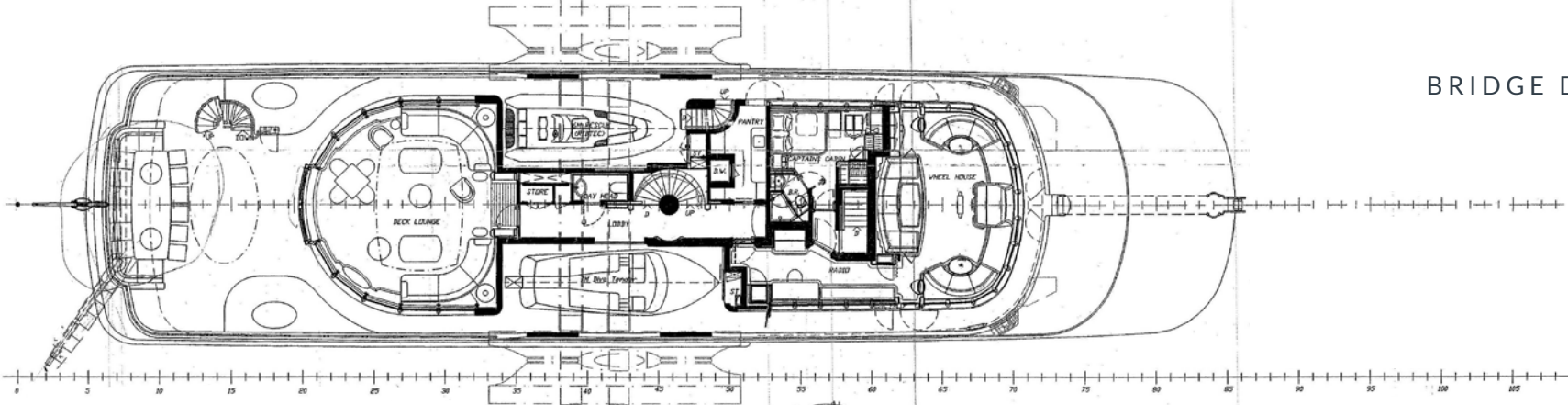
SUN DECK



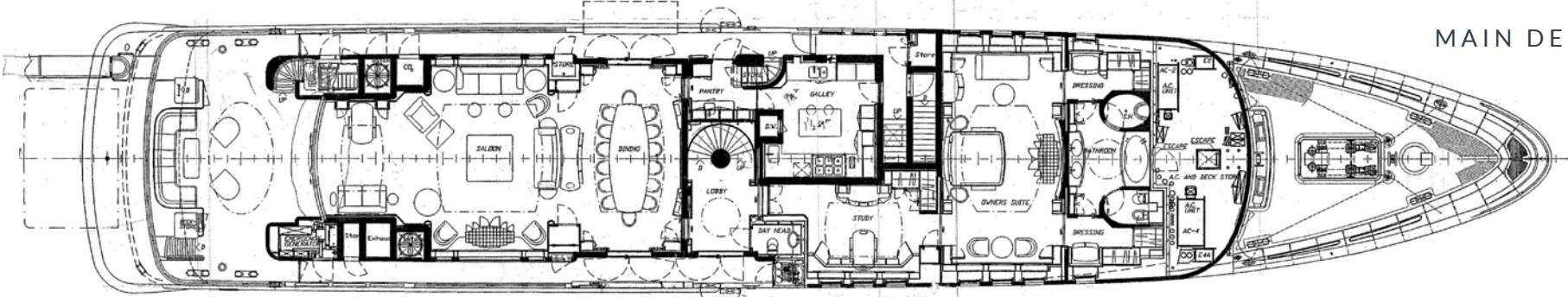
BIMINI LEVEL

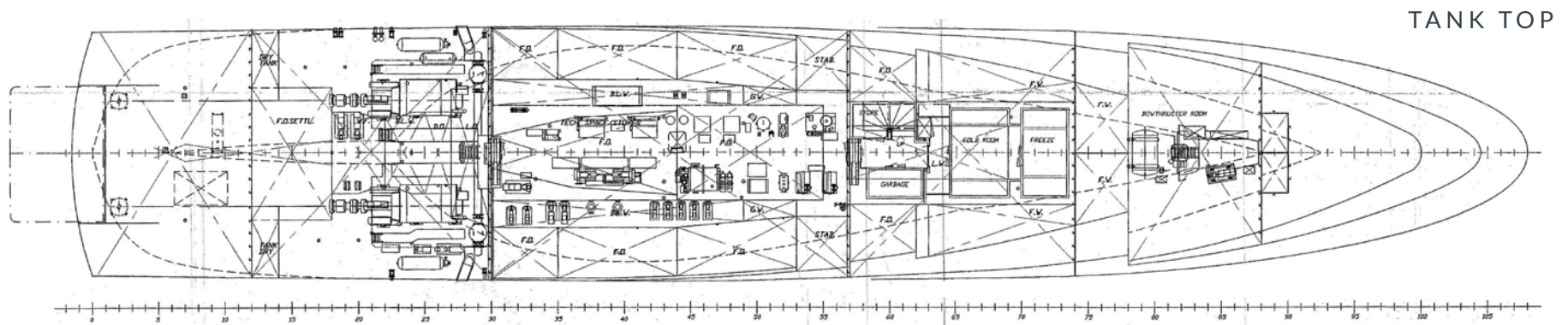
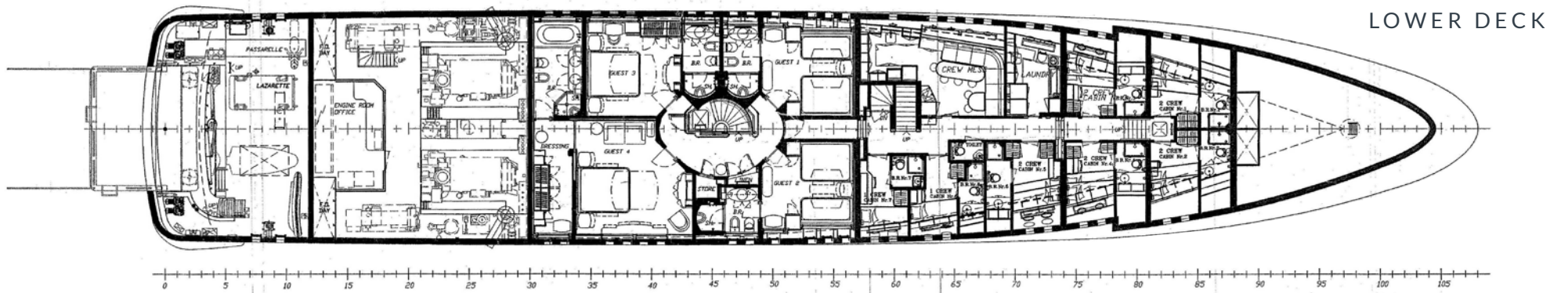


BRIDGE DECK



MAIN DECK





**TORRENS**  
LUXURY COLLECTION